



SURVEYOR'S OFFICE
Hamilton County

Kenton C. Ward, Surveyor

Phone (317) 776-8495

Fax (317) 776-9628

Suite 188

One Hamilton County Square

Noblesville, Indiana 46060-2230

September 30, 2005

To: Hamilton County Drainage Board

Re: Village of West Clay Drain, Section V02-A Arm

Attached is a petition filed by Brenwick Development along with a non-enforcement request, plans, calculations, quantity summary and assessment roll for the Section V02-A Arm, Village of West Clay Drain to be located in Clay Township. I have reviewed the submittals and petition and have found each to be in proper form.

I have made a personal inspection of the land described in the petition. Upon doing so, I believe that the drain is practicable, will improve the public health, benefit a public highway, and be of public utility and that the costs, damages and expenses of the proposed drain will probably be less than the benefits accruing to the owners of land likely to be benefited. The drain will consist of the following:

12" RCP 13 ft

The total length of the drain will be 13 feet.

The retention ponds (lakes) which are located in Commons Block "C" of Section 12001 (per my report dated June 10, 1999 approved at hearing on July 26, 1999 Drainage Board Minute Book 5, Pages 191 to 193) and Commons Block "H" of Section 3004 (per my report dated August 3, 1999, approved at hearing September 27, 1999, Drainage Board Minute Book 5, Pages 225 to 227) are not to be considered part of the regulated drain for maintenance purposes. Only the inlets and outlets will be maintained as part of the regulated drain. The maintenance of the ponds (lakes) shall be the responsibility of the Homeowners Association as per the subdivision covenants on pages 11 and 12, sections 4 and 5, and recorded in the Office of the Hamilton County Recorder as instrument number 199909946964. The Board will however, retain jurisdiction for ensuring the storage volume for which the lake was designed will be retained. Thereby, allowing no fill or easement encroachments.

The subsurface drains (SSD) under curbs are not to be part of the regulated drain. This is per the agreement between Brenwick Development and the Hamilton County Commissioners on April 26, 1999. (See Commissioner's Minute Book 93, Pages 565-566).

I have reviewed the plans and believe the drain will benefit each lot equally. Therefore, I recommend each lot be assessed equally. I also believe that no damages will result to landowners by the construction of this drain. I recommend a maintenance assessment of \$5.00 per acre, \$5.00 per acre for roadways, with a \$120.00 minimum. With this assessment the total annual assessment for this drain/this section will be \$982.20.

The petitioner has submitted surety for the proposed drain at this time. The sureties which are in the form of a Performance Bond are as follows:

Agent: Bond Safeguard Insurance Co.
Date: August 17, 2005
Number: 5017039
For: Storm Sewers
Amount: \$22,224.00

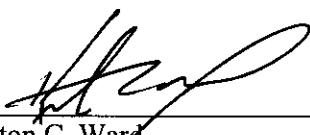
Agent: Bond Safeguard Insurance Company
Date: August 17, 2005
Number: 5017040
For: Erosion Control
Amount: \$17,086.00

Parcels assessed for this drain may be assessed for the Collins-Osborn or William Creek Drain at sometime in the future. Parcels assessed for this drain will also be assessed for the Elliott Creek Drain.

I believe this proposed drain meets the requirements for Urban Drain Classification as set out in IC36-9-27-67 to 69. Therefore, this drain shall be designated as an Urban Drain.

I recommend that upon approval of the above proposed drain that the Board also approve the attached non-enforcement request. The request is for the reduction of the regulated drain easement to those easement widths as shown on the secondary plat for Village of West Clay Section V02-A as recorded in the office of the Hamilton County Recorder.

I recommend the Board set a hearing for this proposed drain for November 28, 2005.



Kenton C. Ward
Hamilton County Surveyor

KCW/llm

STATE OF INDIANA)
)
COUNTY OF HAMILTON)

TO: HAMILTON COUNTY DRAINAGE BOARD
 c/o Hamilton County Surveyor, Courthouse, Noblesville, IN 46060

In the matter of Village of WestClay Subdivision,
Section V02-A Drain Petition.

Petitioner is the owner of all lots in the land affected by the proposed new regulated drain. The drainage will affect various lots in Village of WestClay , a subdivision in Hamilton County, Indiana. The general route of such drainage shall be in existing easements and along public roads as shown in the plans on file in the Surveyor's Office.

Petitioner believes that the cost, damages and expenses of the proposed improvement will be less than the benefits which will result to the owners of the land likely to be benefited thereby. Petitioner believes the proposed improvements will:

- (a) improve public health
- (b) benefit a public street
- (c) be of public utility


Petitioner agrees to pay the cost of construction of the drainage system and requests periodic maintenance assessments by the Board thereafter.

The Petitioner also agrees to the following:

1. To provide the Drainage Board a Performance Bond for the portion of the drainage system, which will be made a regulated drain. The bond will be in the amount of 100% of the Engineer's estimate. The bond will be in effect until construction of 100% of the system is completed and so certified by the Engineer.
2. The Petitioner shall retain an Engineer throughout the construction phase. At completion of the project, the Petitioner's Engineer shall certify that the drainage system which is to be maintained as a regulated drain has been constructed as per construction plans.

3. The Petitioner agrees to request in writing to the County Surveyor any changes from the approved plan and must receive written authorization from the County Surveyor prior to implementation of the change. All changes shall be documented and given to the Surveyor to be placed in the Drain File.
4. The Petitioner shall instruct his Engineer to provide a reproducible print on a 24" x 36" mylar of the final design of the Drainage System. This shall be submitted to the County Surveyor prior to the release of the Performance Bond.
5. The Petitioner shall comply with the Erosion Control Plan as specified on the construction plans. Failure to comply with the Erosion Control Plan shall be determined by the Board as being an obstruction to the drainage system. The County Surveyor shall immediately install or repair the needed measures at Petitioner's cost as per IC 36-9-27-46.

The Petitioner further requests that the Drain be classified as an Urban Drain.



Signed

KEVIN KAWICK BREWICK DEVELOPMENT COMPANY, INC.
Printed Name AN AGENT TO BREWICK TND COMMUNITIES, LLC (OWNER)

Signed

Printed Name

RECORDED OWNER(S) OF LAND INVOLVED

DATE

3/25/04

FINDINGS AND ORDER

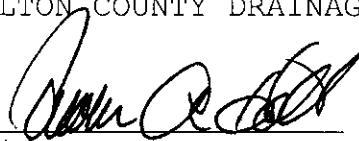
CONCERNING THE MAINTENANCE OF THE

Village of West Clay Drain, Section V02-A Arm

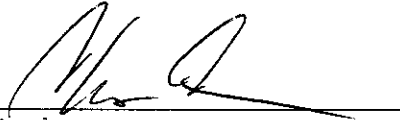
On this *28th day of November 2005*, the Hamilton County Drainage Board has held a hearing on the Maintenance Report and Schedule of Assessments of the *Village of West Clay Drain, Section V02-A Arm*.

Evidence has been heard. Objections were presented and considered. The Board then adopted the original/amended Schedule of Assessments. The Board now finds that the annual maintenance assessment will be less than the benefits to the landowners and issues this order declaring that this Maintenance Fund be established.

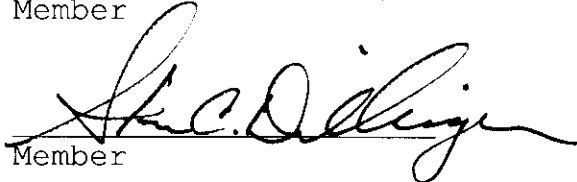
HAMILTON COUNTY DRAINAGE BOARD



President

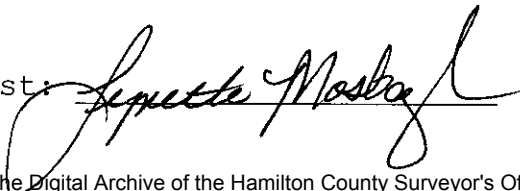


Member



Member

Attest:




CERTIFICATE OF COMPLETION AND COMPLIANCE

TO: HAMILTON COUNTY SURVEYOR
RE: Village of West Clay Section VO2A

I hereby certify that:

1. I am a Register Engineer in the State of Indiana
2. I am familiar with the plans and specifications for the above referenced subdivision.
3. I have personally observed and supervised the completion of the Drainage Facilities for the above referenced subdivision, and
4. The drainage facilities within the above referenced subdivision to the best of my knowledge, information, and belief have been installed and completed in conformity with all plans and specifications.
5. The drainage facilities within the above referenced subdivision to the best of my knowledge, information and belief have been correctly represented on the Record Drawings, Digital Record Drawings and the Structure Data Spreadsheet.

Signature:  Date: 7-18-06

Type or print name: Brandon T Burke, P.E.

Business /Address: The Schneider Corporation
12821 E. New Market Street, Suite 100, Carmel, IN 46032

Telephone: (317) 569-8112

INDIANA REGISTRATION NUMBER

PE 10000075

SEAL




CERTIFICATE OF COMPLETION AND COMPLIANCE

TO: HAMILTON COUNTY SURVEYOR
RE: Village of West Clay Section VO2A

I hereby certify that:

1. I am a Register Engineer in the State of Indiana
2. I am familiar with the plans and specifications for the above referenced subdivision.
3. I have personally observed and supervised the completion of the Drainage Facilities for the above referenced subdivision, and
4. The drainage facilities within the above referenced subdivision to the best of my knowledge, information, and belief have been installed and completed in conformity with all plans and specifications.
5. The drainage facilities within the above referenced subdivision to the best of my knowledge, information and belief have been correctly represented on the Record Drawings, Digital Record Drawings and the Structure Data Spreadsheet.

Signature:  Date: 7-18-06

Type or print name: Brandon T Burke, P.E.

Business /Address: The Schneider Corporation
12821 E. New Market Street, Suite 100, Carmel, IN 46032

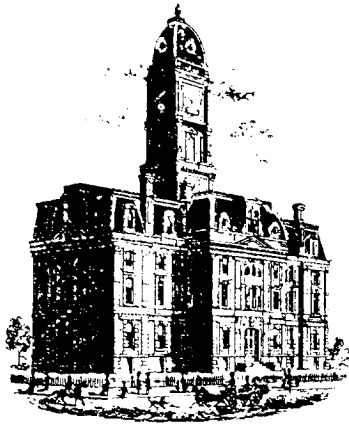
Telephone: (317) 569-8112

INDIANA REGISTRATION NUMBER

PE 10000075

SEAL





K.C.W.

SURVEYOR'S OFFICE
Hamilton County

Kenton C. Ward, CFM
Surveyor of Hamilton County
Phone (317) 776-8495
Fax (317) 776-9628

Suite 188
One Hamilton County Square
Noblesville, Indiana 46060-2230

To: Hamilton County Drainage Board

March 16, 2007

Re: Village of West Clay Drain: Section V02A (Revised)

Attached are as-builts, certificate of completion & compliance, and other information for Village of West Clay Section V02A. An inspection of the drainage facilities for this section has been made and the facilities were found to be complete and acceptable.

During construction, changes there were no significant changes made to the drainage plans submitted with my report for this drain-dated September 30, 2005. The report was approved by the Board at the hearing held November 28, 2005. (See Drainage Board Minutes Book 8, Pages 530-532) Therefore, the length of the drain remains at **13 feet**.

The non-enforcement was approved by the Board at its meeting on November 28, 2005 and recorded under instrument #200600055539.

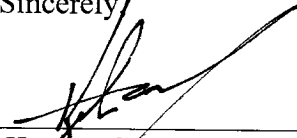
The following sureties were guaranteed by Bond Safeguard Insurance Company and released by the Board on its October 9, 2006 meeting.

Bond-LC No: 5017039
Insured For: Storm Sewers
Amount: \$22,224
Issue Date: August 17, 2005

Bond-LC No: 5017040
Insured For: Erosion Control
Amount: \$17,086
Issue Date: August 17, 2005

I recommend the Board approve the drain's construction as complete and acceptable.

Sincerely,



Kenton C. Ward,
Hamilton County Surveyor, CFM

KCW/slm

SEC. 28-T18-R3E

VILLAGE OF WESTCLAY

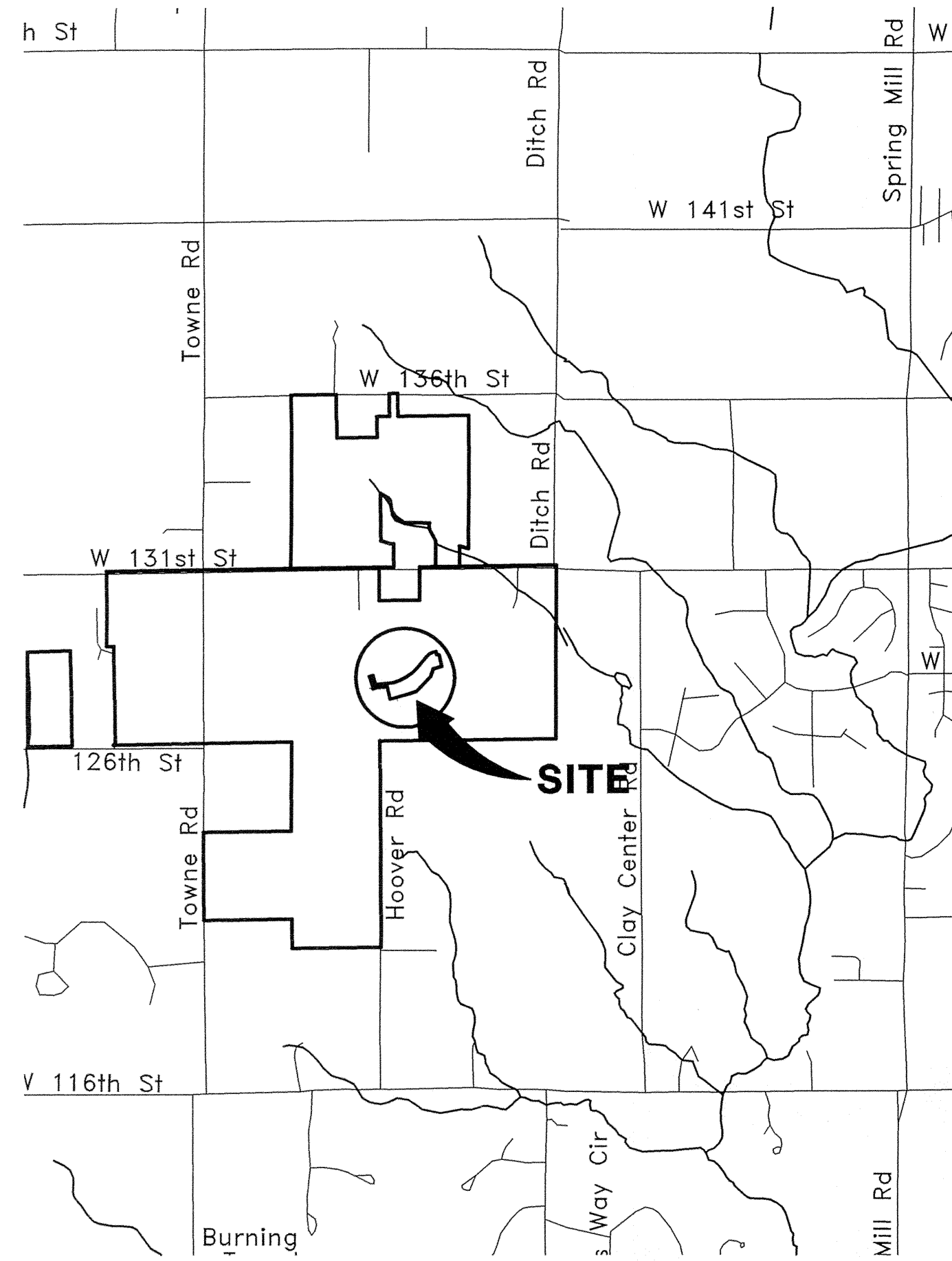
SECTION V02-A

(CONSTRUCTION PLANS)

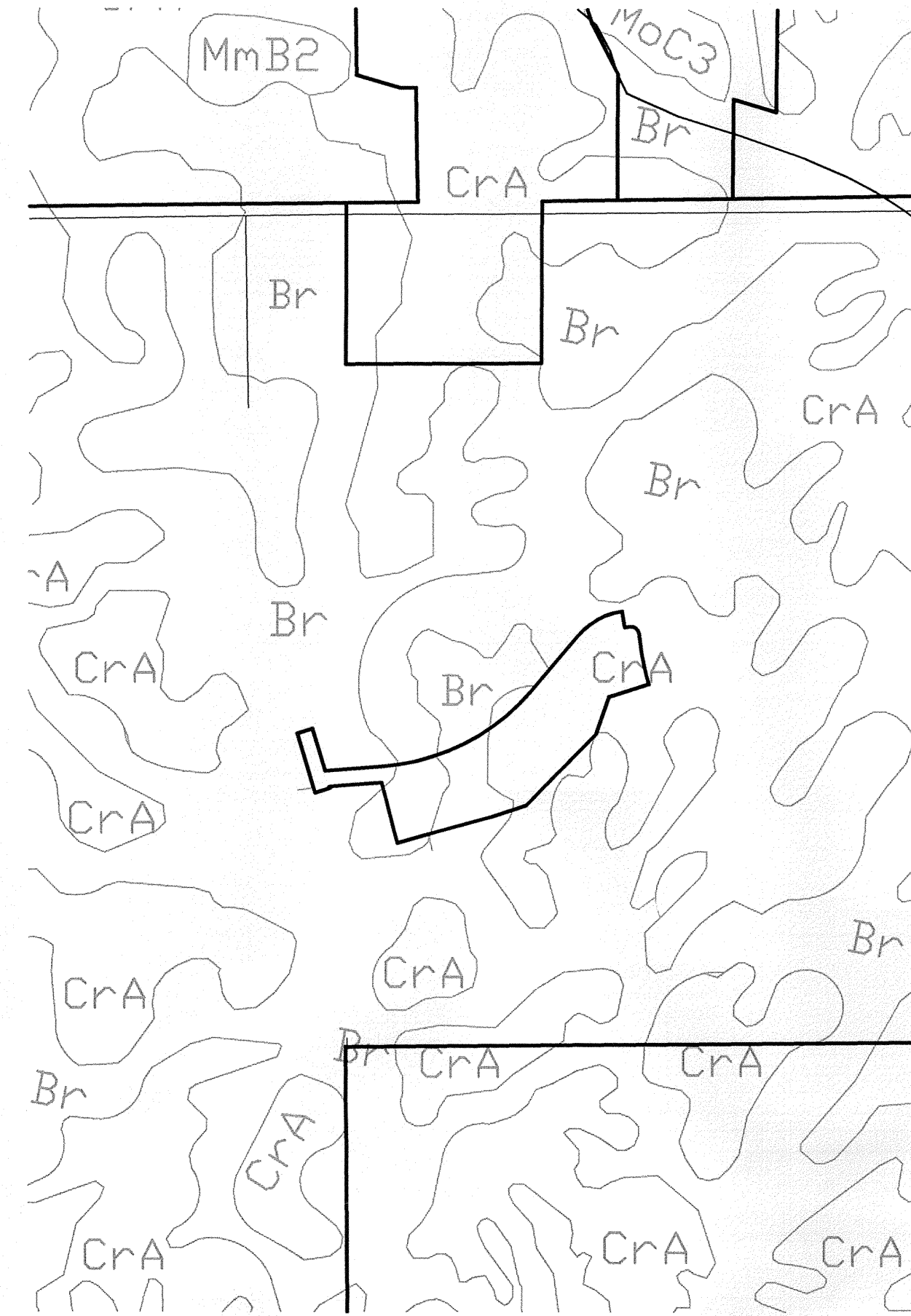
HAMILTON COUNTY CARMEL, INDIANA

**SUB-SURFACE DRAINAGE
SANITARY SEWER
STORM SEWER
RECORD DRAWING**

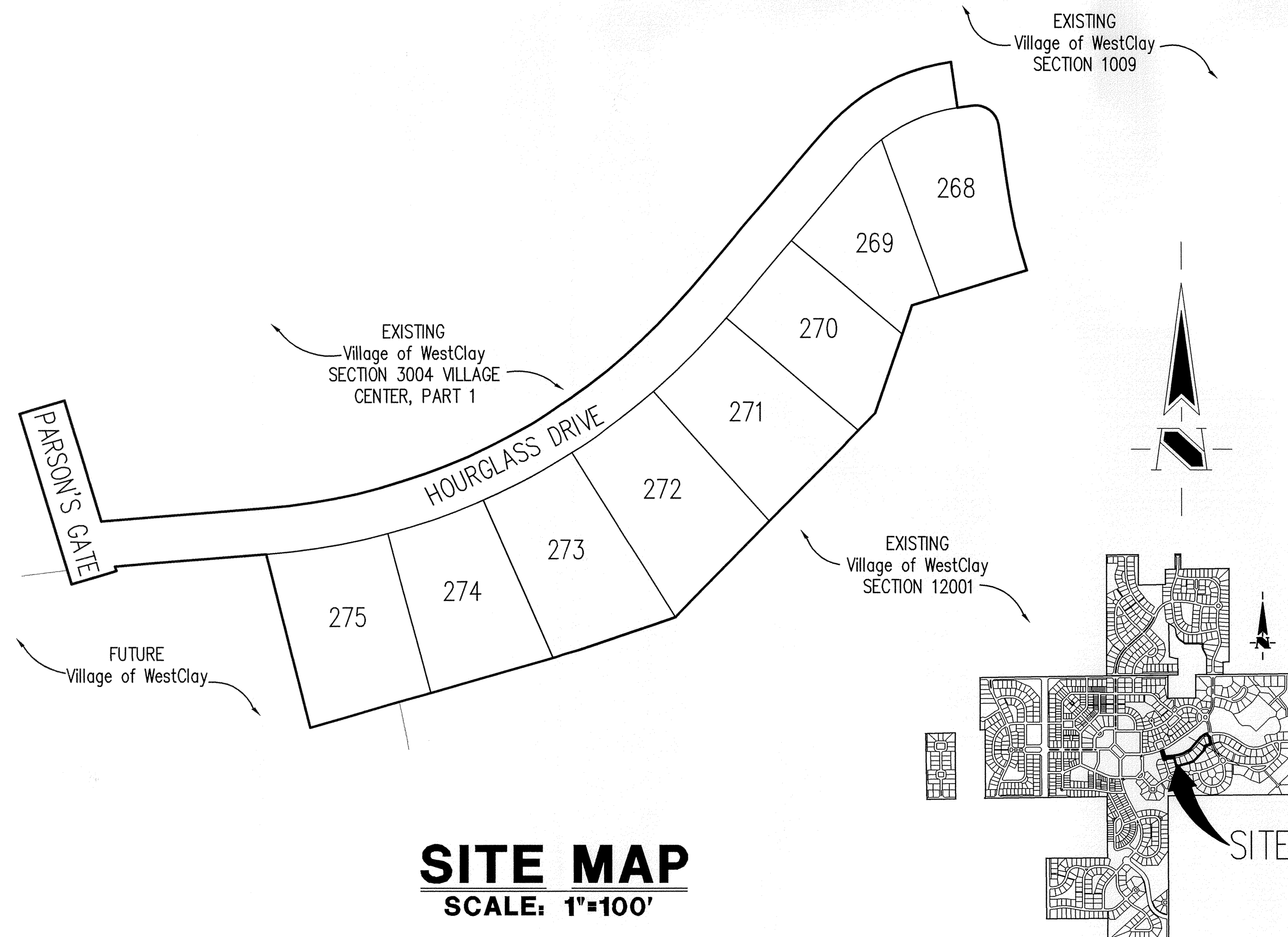
DEVELOPER:
BRENNICK DEVELOPMENT CO.
 12821 E. NEW MARKET ST., SUITE 200
 CARMEL, INDIANA 469032
 (317) 574-3400
 (317) 574-3919 FAX



AREA MAP
NOT TO SCALE



SOILS MAP
NOT TO SCALE



SITE MAP
SCALE: 1"=100'

KEY MAP
NOT TO SCALE

INDEX	
SHEET No.	DESCRIPTION
C100	COVER SHEET
C101	DEVELOPMENT PLAN
C102	PRE-CONSTRUCTION STORMWATER POLLUTION PREVENTION PLAN
C103	STORMWATER POLLUTION PREVENTION PLAN
C104	TRAFFIC CONTROL PLAN
C201	STREET PLAN & PROFILE
C301	INTERSECTION DETAIL
C401	SANITARY SEWER PLAN & PROFILE
C601	STORM SEWER PLAN & PROFILE
C701	WATER DISTRIBUTION PLAN
C801	STREET DETAILS
C802	SANITARY & STORM SEWER DETAILS
C803-C804	STORMWATER POLLUTION PREVENTION DETAILS
C805	HAMILTON COUNTY DETAILS
C901	SPECIFICATIONS



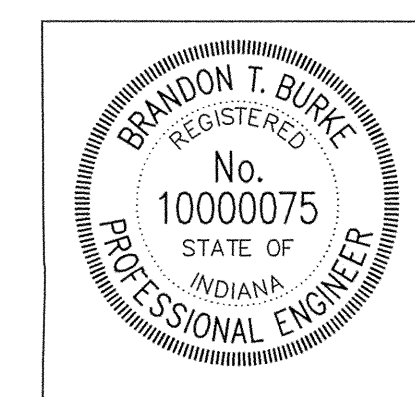
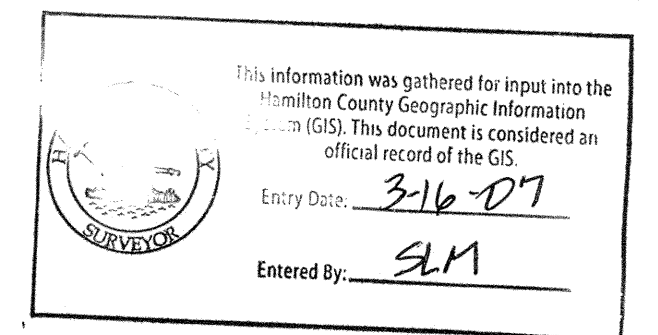
The Schneider Corporation
 12821 E. New Market Street
 Suite 100
 Carmel, IN 46032
 Telephone: 317.569.8112
 Fax: 317.826.6410
 www.schneidercorp.com

Architecture
 Civil Engineering
 Environmental Engineering
 Geotechnical Services
 GIS * LIS
 Home Builder Services
 Interior Design
 Land Surveying
 Landscape Architecture
 Transportation Engineering

Brandon T. Burke

CERTIFIED BY: BRANDON BURKE

E-MAIL ADDRESS: bburke@schneidercorp.com



DATE: 3/1/04

DATE	BY	DESCRIPTION
3/24/04	DCC	C101, C201, C301, C801
1/7/05	DCC	ALL SHEETS
2/14/05	BET	ALL SHEETS
4/22/05	BTB	C101, C801, C900
4/28/08	BTB	C101, C801, C802
1/23/06	BET	C101, C401
3/07/06	DCC	C101, C201, C401
3/16/06	JLF	C101
4/7/06	BET	ALL SHEETS
7/17/06	BET	"RECORD DRAWING"

PROJECT ENGINEER: _____

CHECKED BY: _____ DATE CHECKED: _____

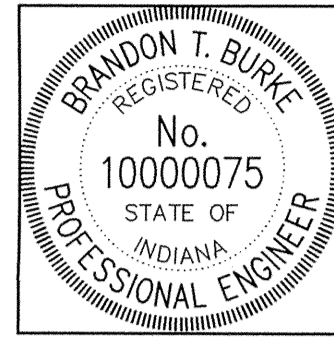
© 2004, The Schneider Corporation

JOB No. 1238.V02

SHEET
C100
 OF
 16

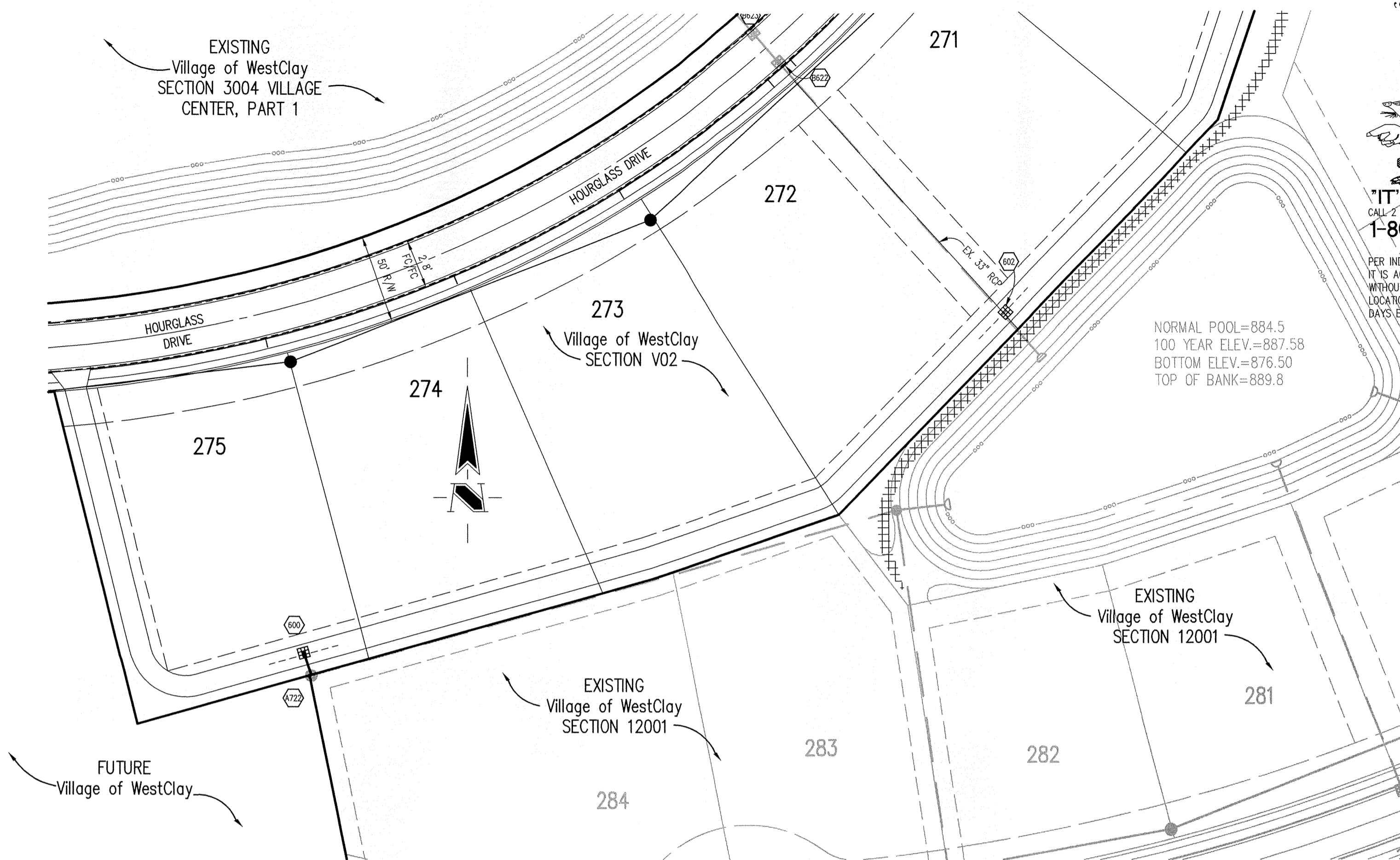
CERTIFICATION FOR "RECORD DRAWING"

Brandon T. Burke
 CERTIFIED BY:
 THE SCHNEIDER CORPORATION
 12821 E. NEW MARKET STREET, SUITE 301
 CARMEL, INDIANA 46032
 (317) 569-8112 FAX (317) 826-6410



NOTE:
 Record drawing certification only for top of casting, invert elevations and lengths of pipe. Slope percentage represents a calculated figure and is for general information only.

DATE: 7/17/06



HOLEY MOLEY SAYS "DON'T DIG BLIND"

"IT'S THE LAW"
 CALL 2 WORKING DAYS BEFORE YOU DIG
1-800-382-5544
 CALL TOLL FREE
 PER INDIANA STATE LAW IS-69-1991. IT IS AGAINST THE LAW TO EXCAVATE WITHOUT NOTIFYING THE UNDERGROUND LOCATION SERVICE TWO (2) WORKING DAYS BEFORE COMMENCING WORK.

- GENERAL NOTES**
- TEMPORARY TRAFFIC CONTROL DURING CONSTRUCTION TO CONFORM TO APPLICABLE LOCAL AND STATE STANDARDS.
 - ALL CONSTRUCTION ACTIVITY ON THIS SITE TO BE PERFORMED IN COMPLIANCE WITH APPLICABLE O.S.H.A. STANDARDS FOR WORKER SAFETY.
 - IT SHALL BE THE CONTRACTORS RESPONSIBILITY TO FIELD VERIFY ALL UTILITY LOCATIONS BEFORE CONSTRUCTION BEGINS.
 - CONTRACTORS SHALL MINIMIZE DAMAGE TO EXISTING TREES.
 - FOR INSTALLATION OF STORM MAINS, WATER MAINS, SANITARY MAINS, WATER SERVICE LATERALS, SANITARY SERVICE LATERALS UNDER CITY STREETS, REGARDLESS OF THE JURISDICTION OF THE UTILITY, THE MINIMUM COVER FROM THE TOP OF THE INSTALLED PAVEMENT TO THE TOP OF THE INSTALLED PIPE SHALL BE THE PAVEMENT SECTION THICKNESS (ALL BITUMINOUS AND AGGREGATE MATERIAL ABOVE THE SUBGRADE) PLUS 1'-0" IF THE STANDARD PRACTICE OF THE UTILITY THAT HAS JURISDICTION OVER THE INSTALLATION HAS A MORE STRINGENT COVER REQUIREMENT, THE MORE STRINGENT REQUIREMENT SHALL GOVERN.

BENCHMARK

TBM #44
 USGS BENCHMARK
 CUT "X" NORTH BONNET BOLT IN FIRE HYDRANT
 EAST SIDE HOOVER RD. ±100' SOUTH OF CLARIDGE
 FARM ENTRANCE.
 ELEVATION - 893.39

LEGEND/DETAILS

Sheet	Detail Number	Description
C802	11	Bedding Detail - Reinforced Concrete Pipe (RCP)
C802	8	Paved Area Inlet Detail
C802	12	Beehive Inlet Detail
C802	9	Precast Concrete End Section
C802	10	Rip/Rap Detail @ End Section

NOTE

REVISIONS:
 1. ELEV. 2/14/06, REVISED PER CLIENT.
 2. DOC. 4/26/06, ADDED STRUCTURE #402 TO PROFILE.
 3. ELEV. 7/17/06, RECORD DRAWING.

Brandon T. Burke
 DATE: 3/1/04
 THIS DRAWING AND THE IDEAS, DESIGNS AND CONCEPTS CONTAINED HEREIN ARE THE EXCLUSIVE INTELLECTUAL PROPERTY OF THE SCHNEIDER CORPORATION AND ARE NOT TO BE USED OR REPRODUCED, IN WHOLE OR IN PART, WITHOUT THE WRITTEN CONSENT OF THE SCHNEIDER CORPORATION.
 © COPYRIGHTED BY THE SCHNEIDER CORP. (2004)

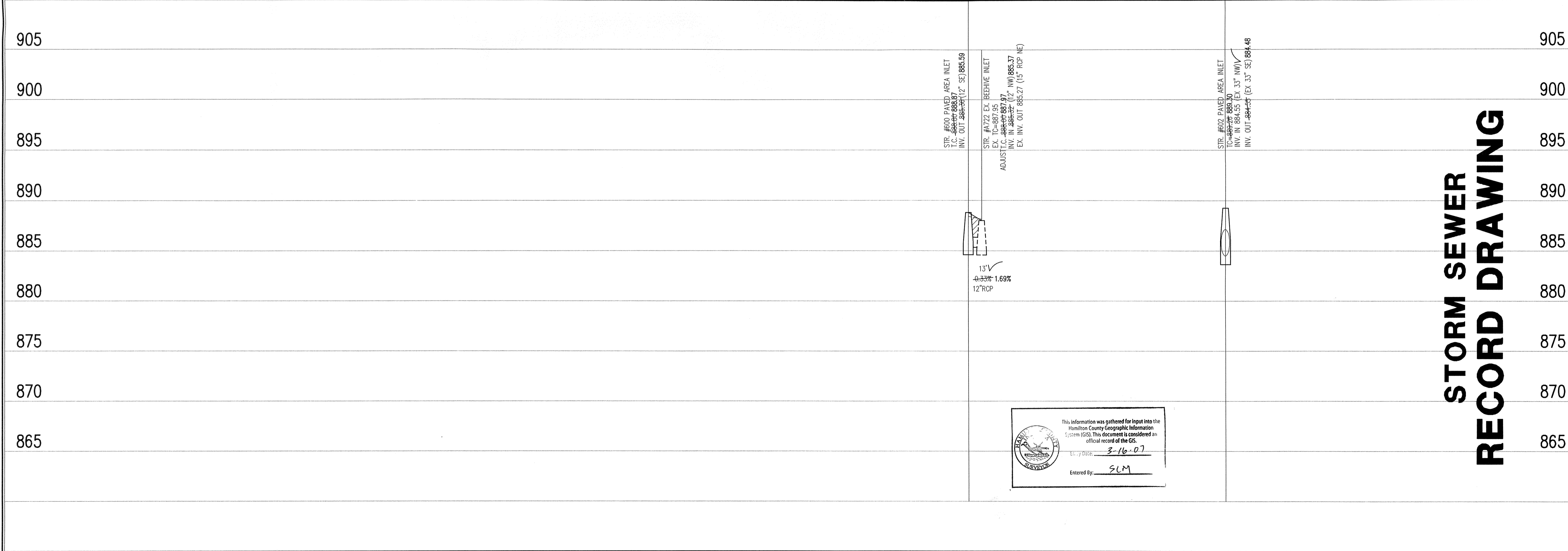
Schneider

THE SCHNEIDER CORPORATION
 12821 E. New Market Street
 Suite 100
 Carmel, IN 46032
 Telephone: 317.569.8112
 Fax: 317.826.6410
 www.schneidercorp.com

Architecture
 Civil Engineering
 Environmental Engineering
 Geotechnical Services
 GIS * LIS
 Home Builder Services
 Interior Design
 Land Surveying
 Landscape Architecture
 Transportation Engineering

STORM SEWER PLAN

SCALE: 1"=50'



STORM SEWER RECORD DRAWING

This information was gathered for input into the Hamilton County Geographic Information System (GIS). This document is considered an official record of the GIS.

DATE: 3-16-07
 Entered By: SLM

STORM SEWER PROFILE

LEGEND

	Existing Grade
	New Grade
	Granular Backfill

SCALE: HORZ.: 1"=50'
 VERT.: 1"=5'

Village of WestClay
 SECTION V02-A
 CARMEL, INDIANA
 BRENNWICK DEVELOPMENT CO.
 CARMEL, INDIANA

DATE: 3/1/04	PROJECT NO.: 1238.V02
DRAWN BY: DCC	CHECKED BY:
SHEET TITLE: STORM SEWER PLAN & PROFILE	
DRAWING FILES: N:\1238\002\DWGS\C601.DWG XREF: V02-BS.DWG XREF: 1009BS.DWG XREF: 1004BS.DWG XREF: 1201BS.DWG XREF: MD-BS-E.DWG XREF: SANITARY.DWG	

SHEET NO.:
C601

SEC. 28-T18-R3E

VILLAGE OF WESTCLAY

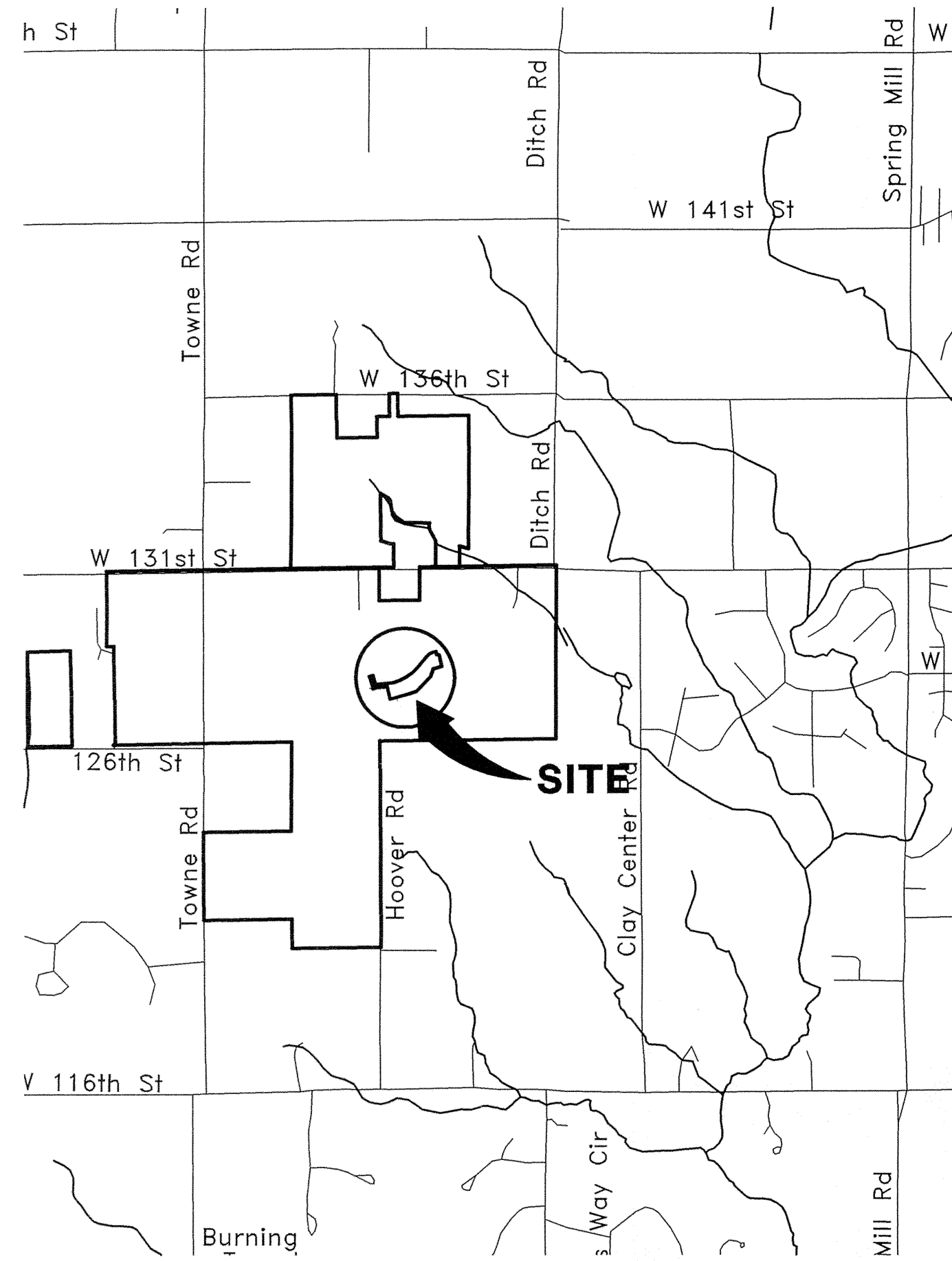
SECTION V02-A

(CONSTRUCTION PLANS)

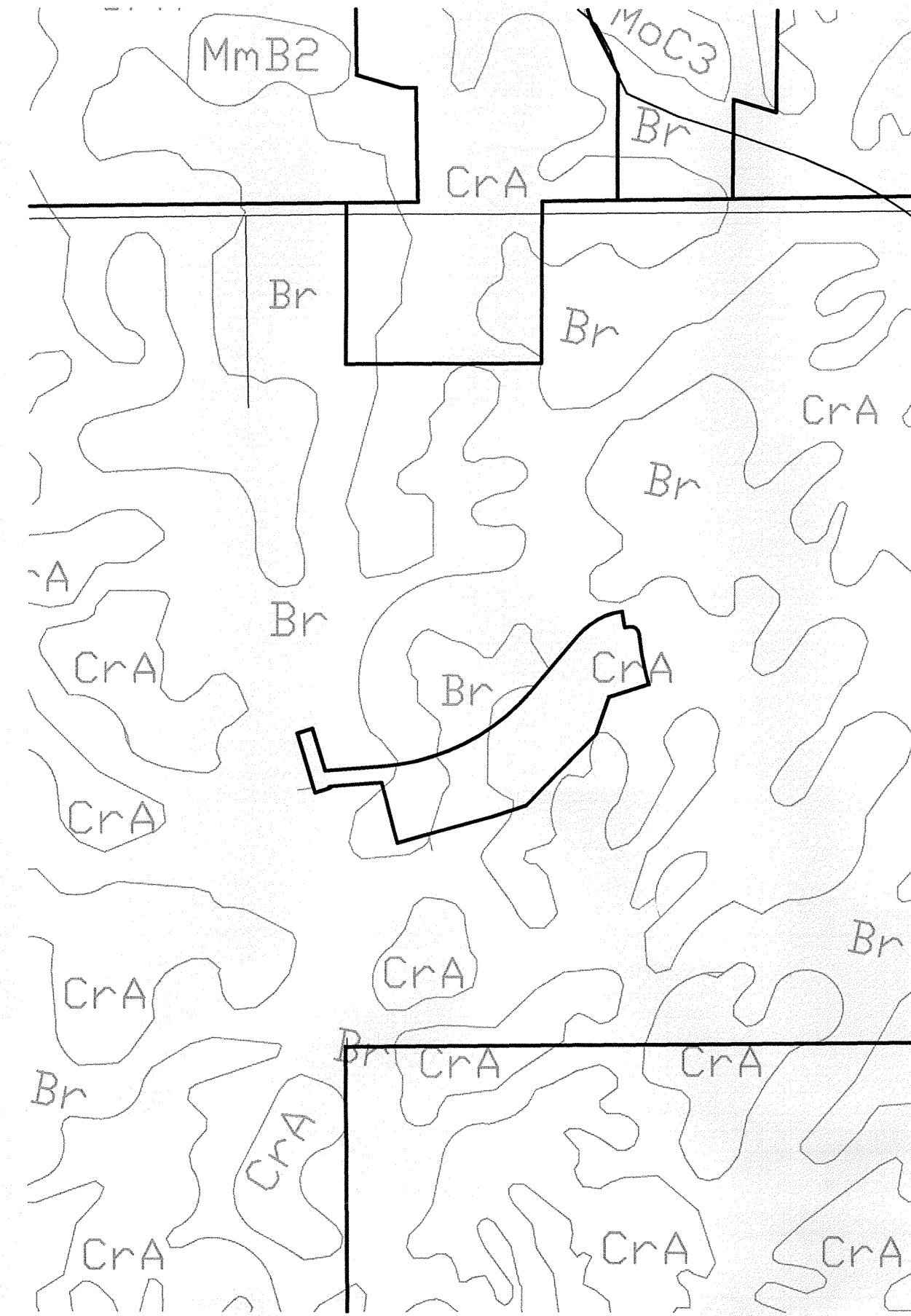
HAMILTON COUNTY CARMEL, INDIANA

**SUB-SURFACE DRAINAGE
SANITARY SEWER
STORM SEWER
RECORD DRAWING**

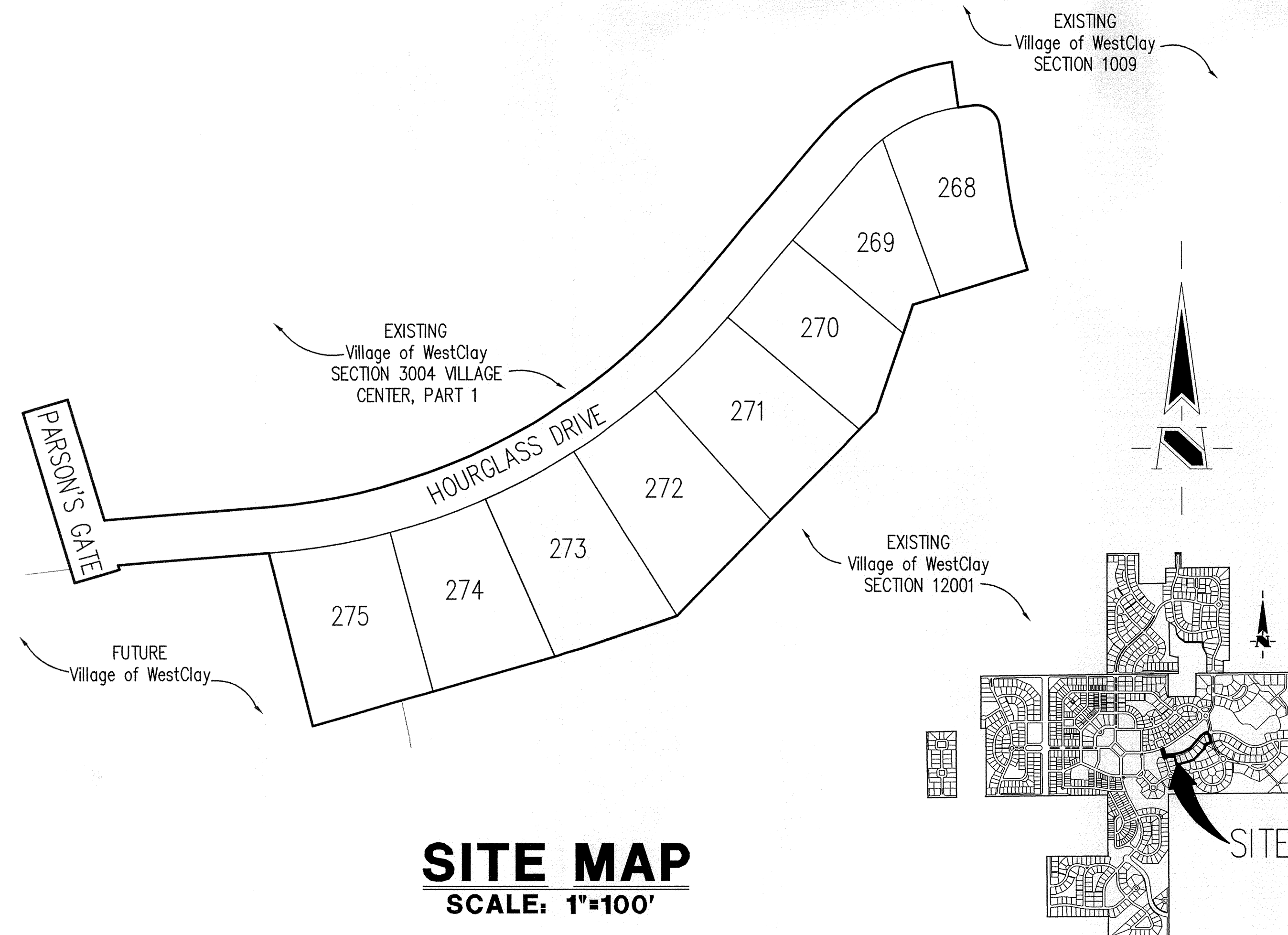
DEVELOPER:
BRENNICK DEVELOPMENT CO.
 12821 E. NEW MARKET ST., SUITE 200
 CARMEL, INDIANA 469032
 (317) 574-3400
 (317) 574-3919 FAX



AREA MAP
NOT TO SCALE



SOILS MAP
NOT TO SCALE



SITE MAP
SCALE: 1"=100'

KEY MAP
NOT TO SCALE

INDEX	
SHEET No.	DESCRIPTION
C100	COVER SHEET
C101	DEVELOPMENT PLAN
C102	PRE-CONSTRUCTION STORMWATER POLLUTION PREVENTION PLAN
C103	STORMWATER POLLUTION PREVENTION PLAN
C104	TRAFFIC CONTROL PLAN
C201	STREET PLAN & PROFILE
C301	INTERSECTION DETAIL
C401	SANITARY SEWER PLAN & PROFILE
C601	STORM SEWER PLAN & PROFILE
C701	WATER DISTRIBUTION PLAN
C801	STREET DETAILS
C802	SANITARY & STORM SEWER DETAILS
C803-C804	STORMWATER POLLUTION PREVENTION DETAILS
C805	HAMILTON COUNTY DETAILS
C901	SPECIFICATIONS



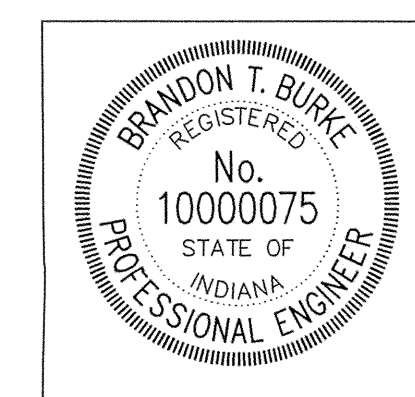
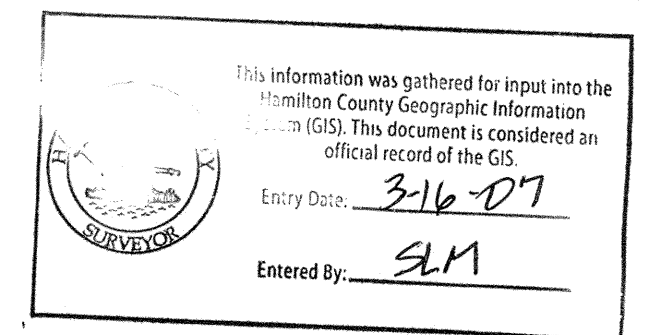
The Schneider Corporation
 12821 E. New Market Street
 Suite 100
 Carmel, IN 46032
 Telephone: 317.569.8112
 Fax: 317.826.6410
 www.schneidercorp.com

Architecture
 Civil Engineering
 Environmental Engineering
 Geotechnical Services
 GIS * LIS
 Home Builder Services
 Interior Design
 Land Surveying
 Landscape Architecture
 Transportation Engineering

Brandon T. Burke

CERTIFIED BY: BRANDON BURKE

E-MAIL ADDRESS: bburke@schneidercorp.com



DATE: 3/1/04

DATE	BY	DESCRIPTION
3/24/04	DCC	C101, C201, C301, C801
1/7/05	DCC	ALL SHEETS
2/14/05	BET	ALL SHEETS
4/22/05	BTB	C101, C801, C900
4/28/08	BTB	C101, C801, C802
1/23/06	BET	C101, C401
3/07/06	DCC	C101, C201, C401
3/16/06	JLF	C101
4/7/06	BET	ALL SHEETS
7/17/06	BET	"RECORD DRAWING"

PROJECT ENGINEER: _____

CHECKED BY: _____ DATE CHECKED: _____

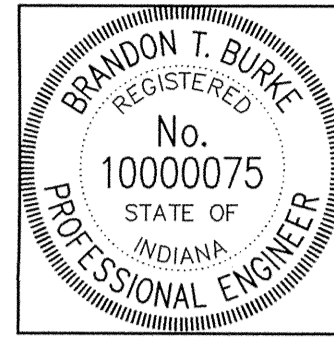
© 2004, The Schneider Corporation

JOB No. 1238.V02

SHEET
C100
 OF
 16

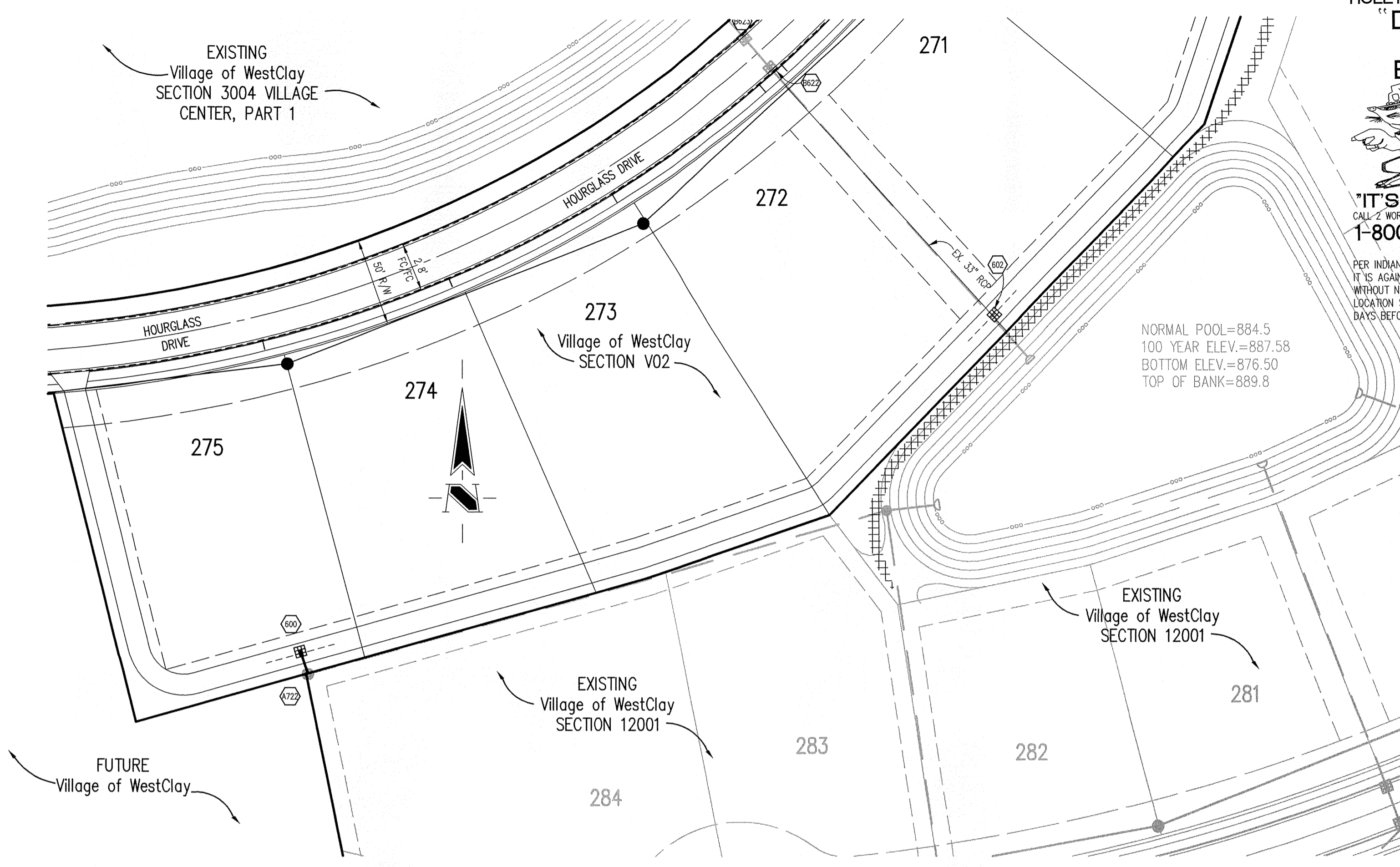
CERTIFICATION FOR "RECORD DRAWING"

Brandon T. Burke
 CERTIFIED BY:
 THE SCHNEIDER CORPORATION
 12821 E. NEW MARKET STREET, SUITE 301
 CARMEL, INDIANA 46032
 (317) 569-8112 FAX (317) 826-6410



NOTE:
 Record drawing certification only for top of casting, invert elevations and lengths of pipe. Slope percentage represents a calculated figure and is for general information only.

DATE: 7/17/06



HOLEY MOLEY SAYS "DON'T DIG BLIND"

"IT'S THE LAW"
 CALL 2 WORKING DAYS BEFORE YOU DIG
1-800-382-5544
 CALL TOLL FREE
 PER INDIANA STATE LAW IS-69-1991. IT IS AGAINST THE LAW TO EXCAVATE WITHOUT NOTIFYING THE UNDERGROUND LOCATION SERVICE TWO (2) WORKING DAYS BEFORE COMMENCING WORK.

GENERAL NOTES

- TEMPORARY TRAFFIC CONTROL DURING CONSTRUCTION TO CONFORM TO APPLICABLE LOCAL AND STATE STANDARDS.
- ALL CONSTRUCTION ACTIVITY ON THIS SITE TO BE PERFORMED IN COMPLIANCE WITH APPLICABLE O.S.H.A. STANDARDS FOR WORKER SAFETY.
- IT SHALL BE THE CONTRACTORS RESPONSIBILITY TO FIELD VERIFY ALL UTILITY LOCATIONS BEFORE CONSTRUCTION BEGINS.
- CONTRACTORS SHALL MINIMIZE DAMAGE TO EXISTING TREES.
- FOR INSTALLATION OF STORM MAINS, WATER MAINS, SANITARY MAINS, WATER SERVICE LATERALS, SANITARY SERVICE LATERALS UNDER CITY STREETS, REGARDLESS OF THE JURISDICTION OF THE UTILITY, THE MINIMUM COVER FROM THE TOP OF THE INSTALLED PAVEMENT TO THE TOP OF THE INSTALLED PIPE SHALL BE THE PAVEMENT SECTION THICKNESS (ALL BITUMINOUS AND AGGREGATE MATERIAL ABOVE THE SUBGRADE) PLUS 1'-0" IF THE STANDARD PRACTICE OF THE UTILITY THAT HAS JURISDICTION OVER THE INSTALLATION HAS A MORE STRINGENT COVER REQUIREMENT, THE MORE STRINGENT REQUIREMENT SHALL GOVERN.

BENCHMARK

TBM #44
 USGS BENCHMARK
 CUT "X" NORTH BONNET BOLT IN FIRE HYDRANT
 EAST SIDE HOOVER RD. ±100' SOUTH OF CLARIDGE
 FARM ENTRANCE.
 ELEVATION - 893.39

LEGEND/DETAILS

Sheet	Detail Number	Description
C802	11	Bedding Detail - Reinforced Concrete Pipe (RCP)
C802	8	Paved Area Inlet Detail
C802	12	Beehive Inlet Detail
C802	9	Precast Concrete End Section
C802	10	Rip/Rap Detail @ End Section

NOTE

REVISIONS:
 1. ELEV. 2/14/06, REVISED PER CLIENT.
 2. ELEV. 4/26/06, ADDED STRUCTURE #402 TO PROFILE.
 3. ELEV. 7/17/06, RECORD DRAWING.

Brandon T. Burke
 DATE: 3/1/04
 THIS DRAWING AND THE IDEAS, DESIGNS AND CONCEPTS CONTAINED HEREIN ARE THE EXCLUSIVE INTELLECTUAL PROPERTY OF THE SCHNEIDER CORPORATION AND ARE NOT TO BE USED OR REPRODUCED, IN WHOLE OR IN PART, WITHOUT THE WRITTEN CONSENT OF THE SCHNEIDER CORPORATION.
 © COPYRIGHTED BY THE SCHNEIDER CORP. (2004)

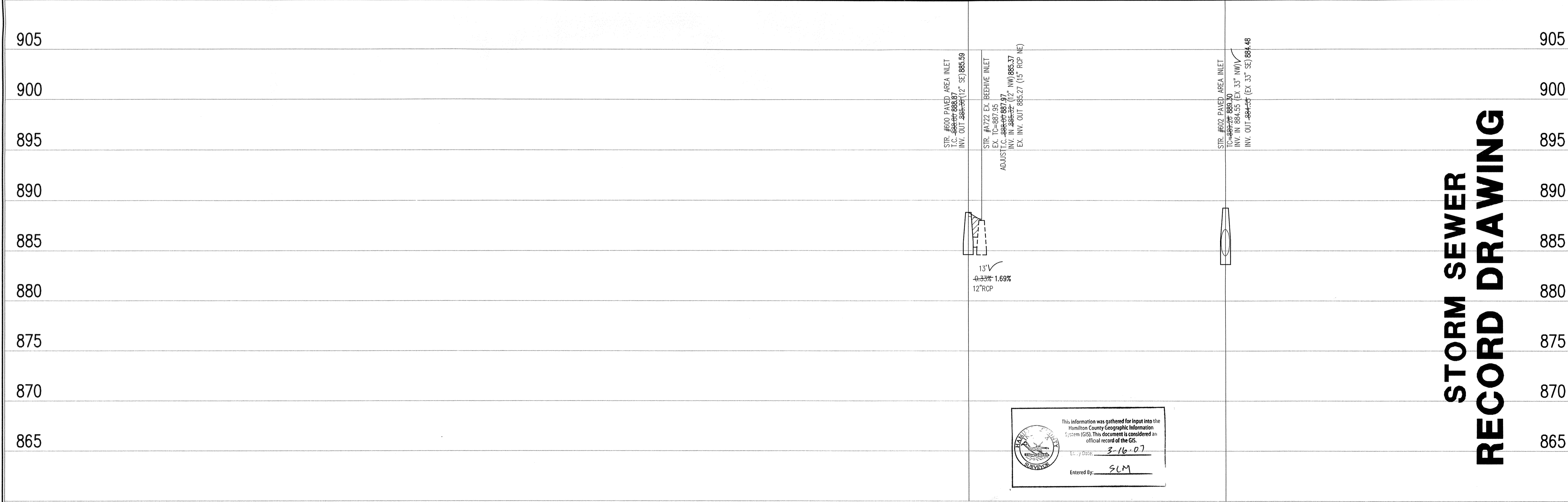
Schneider

THE SCHNEIDER CORPORATION
 12821 E. New Market Street
 Suite 100
 Carmel, IN 46032
 Telephone: 317.569.8112
 Fax: 317.826.6410
 www.schneidercorp.com

Architecture
 Civil Engineering
 Environmental Engineering
 Geotechnical Services
 GIS * LIS
 Home Builder Services
 Interior Design
 Land Surveying
 Landscape Architecture
 Transportation Engineering

STORM SEWER PLAN

SCALE: 1"=50'



STORM SEWER RECORD DRAWING

This information was gathered for input into the Hamilton County Geographic Information System (GIS). This document is considered an official record of the GIS.

DATE: 3-16-07
 Entered By: SLM

STORM SEWER PROFILE

LEGEND

Existing Grade	New Grade	Granular Backfill

SCALE: HORZ.: 1"=50'
 VERT.: 1"=5'

Village of WestClay
 SECTION V02-A
 CARMEL, INDIANA
 BRENNWICK DEVELOPMENT CO.
 CARMEL, INDIANA

DATE: 3/1/04	PROJECT NO.: 1238.V02
DRAWN BY: DCC	CHECKED BY:
SHEET TITLE: STORM SEWER PLAN & PROFILE	
DRAWING FILES: N:\1238\002\DWGS\C601.DWG XREF: V02-BS.DWG XREF: 1009BS.DWG XREF: 1004BS.DWG XREF: 1201BS.DWG XREF: MD-BS-E.DWG XREF: SANITARY.DWG	

SHEET NO.: **C601**